

Availability of MS SQL can be monitored in CM at least by the following two methods :

## 1. Standard CM conditions, e.g. service status

use the Watches condition [Service status](#) [1] for SQL services. Usually it's a service of the MS SQL server for each instance and agent services.

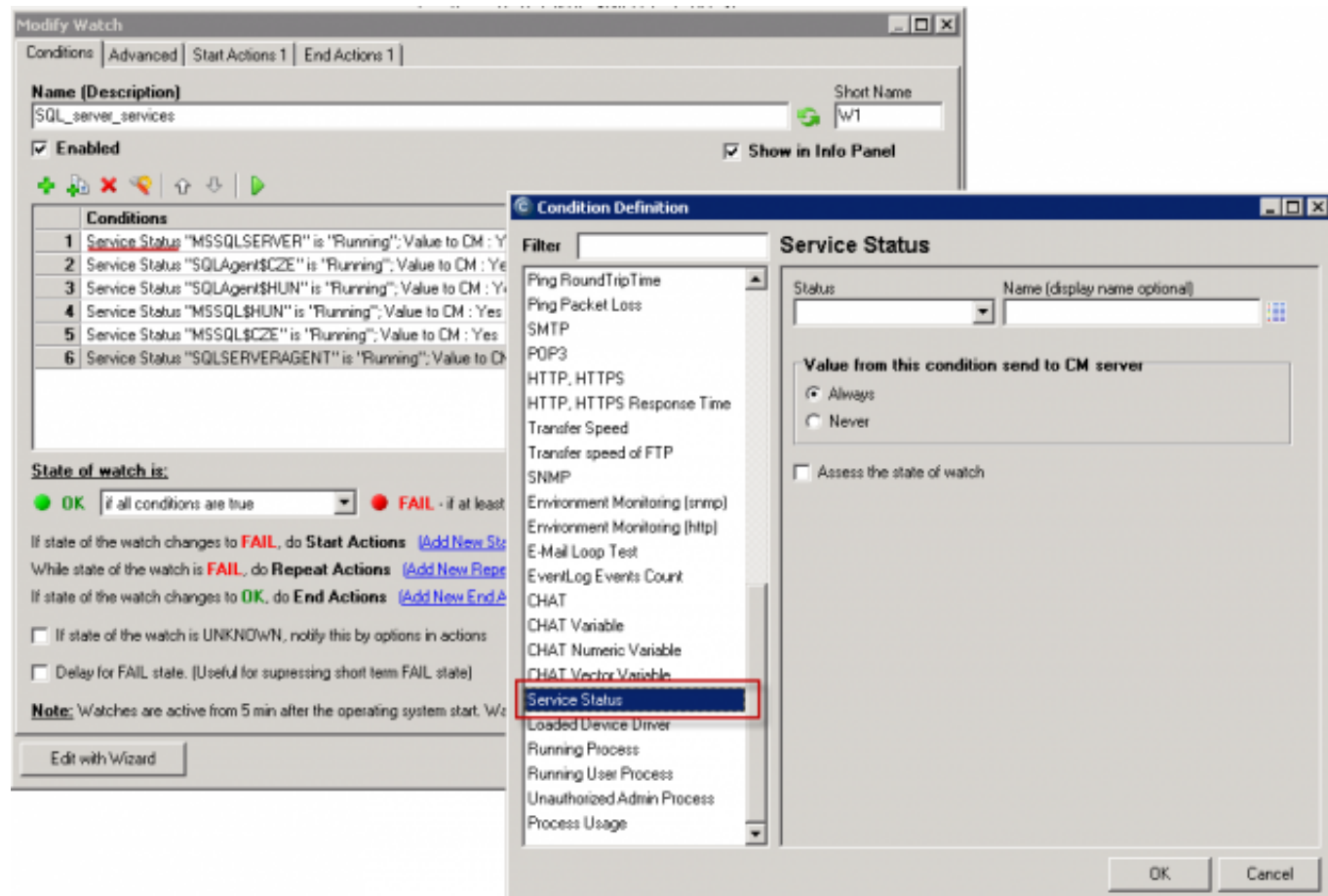


Image: Konfigurácia podmienok Service status v C-MonitorConsole

Stav	Název	Hodnota	Posledná zmena stavu	Podmienky k určenia stavu	CM ID počítača	Název počítača v sieti	Umiestnenie	Posl. online spojenie s CM
Running	Service MSSQLSERVER	Running	23. Feb 2013 22:06:38	OK, because all conditions are true • TRUE - Service "MSSQLSERVER" status is Running, our stat. Running • TRUE - Service "SQLAgent\$C2E" status is Running, our stat. Running • TRUE - Service "SQLAgent\$HUM" status is Running, our stat. Running • TRUE - Service "MSSQL\$BULK" status is Running, our stat. Running • TRUE - Service "MSSQL\$C2E" status is Running, our stat. Running • TRUE - Service "SQLSERVERAGENT" status is Running, our stat. Running	POH2V03	NAVY	Serverovne	6. Mar 2013 00:20:54

Image: Ukážka zobrazenia stavu služieb v CM Portáli

## 2. Test of access to SQL server by a prepared template from Watches

It's more efficient to determine function of all services by real access to the SQL server, C-Monitor is able to simulate access to the SQL server by using CHAT scripts. You don't need to write any script, it's already prepared and all you have to do, is to enter name of the SQL server or its instance in the correct form, and username and password for access

You must choose name of the SQL server, resp. the instance according to type of its installation. For the first SQL instance with the default configuration, write one of the following options into the field Server :

1. **network name of the server**
2. **network name of the server\ name of instance** (the name of instance only is there's only one, it's usually MSSQLSERVER or SQLSERVER or possibly SQLEXPRESS). For other instances, write name of the service for the SQL server's instance in the form MSSQL\$instance\_name

The test's result is the success / failure of access to SQL. We recommend to use performance tests running on this exact same principle, through which you don't just measure the success of access to SQL server, but also the time of the SQL server's response, or even of a selected database, in miliseconds. Find out more in the article [MS SQL performance by measuring of time](#) [2]

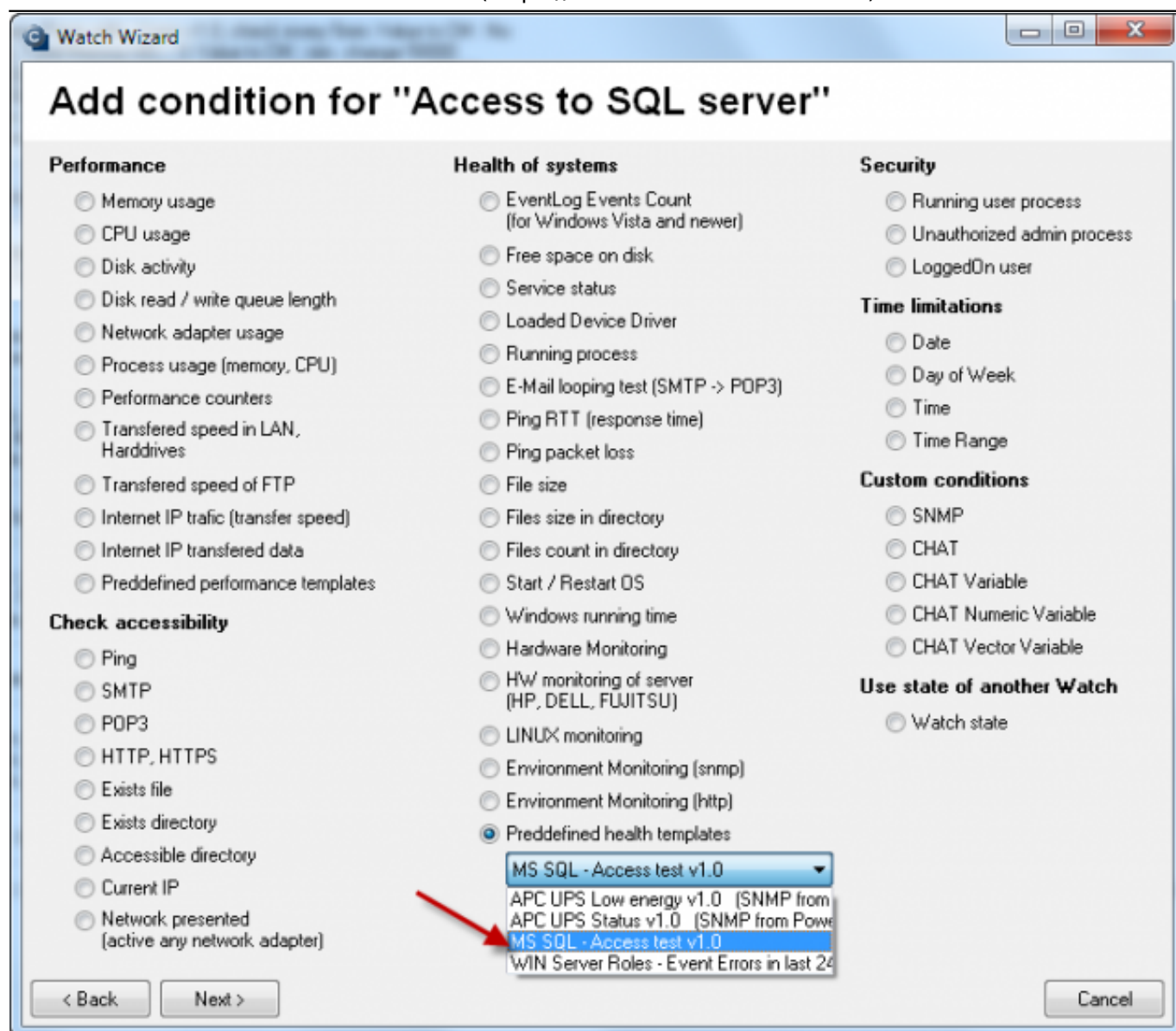


Image: Testu prístupu k SQL serveru - výber z predpripravených šablón

**Watch Wizard**

## MS SQL - Access test v1.0

Script Name  
MS SQL - Access test v1.0

Script

Parameter	Value
MSSQL access test	<input checked="" type="checkbox"/>
MSSQL path to vbs-script	.\Cnf\SWL_templates\SQL_VBS\mssql_access.vbs
Windows\Server authentication	<input checked="" type="checkbox"/>
Server	SERVER\SQLEXPRESS
User	test
Password	XXXXXXXXXXXXXXXXXXXX

Údaje, ktoré zadávate k testu prístupu k SQL serveru, voľba názvu servera je vysvetlená v článku

Test, Edit Script

Operation: Successful Test Period: 5 Unit: min

Value from this condition send to CM server

☐ Always  
☒ Never

☐ Assess the state of watch

< Back Next > Cancel

Image: Parametre pre konfiguráciu prístupového testu k SQL serveru

Work with the script, such as testing and signing, is described in the article [MS SQL performance by measuring of time](#) [2]

Date:

03/06/2013



[3]



[4]



[5]



[6]

### Links

[1] [https://www.customermonitor.co/node/667/#Service\\_status](https://www.customermonitor.co/node/667/#Service_status)

[2] <https://www.customermonitor.co/how-cm-works-0/monitoring-and-diagnostics/availability-and-load-sql-servers/ms-sql-performance-1>

[3] [https://www.customermonitor.co/sites/default/files/Stav\\_sluzieb\\_konfiguracia\\_Watches.png](https://www.customermonitor.co/sites/default/files/Stav_sluzieb_konfiguracia_Watches.png)

[4] [https://www.customermonitor.co/sites/default/files/Stav\\_sluzieb\\_v\\_CM-Portali.png](https://www.customermonitor.co/sites/default/files/Stav_sluzieb_v_CM-Portali.png)

[5] [https://www.customermonitor.co/sites/default/files/AccessTest\\_k\\_overenie\\_zivosti\\_SQLservera\\_vyber\\_sablony.png](https://www.customermonitor.co/sites/default/files/AccessTest_k_overenie_zivosti_SQLservera_vyber_sablony.png)

[6] [https://www.customermonitor.co/sites/default/files/Vstupne\\_udaje\\_k\\_access\\_testu\\_do\\_SQL\\_databazy.png](https://www.customermonitor.co/sites/default/files/Vstupne_udaje_k_access_testu_do_SQL_databazy.png)