

Offers a detailed list of transfers through your selected ports. Using the filter on right side of the window, choose the required parameters such as network, which you're monitoring, time interval, ports, type of graph, and select show in table or graph.

List of ports to data transfers is located on several places, one of them is the section breakdown of [data transfers according to IP addresses](#) [1].

The screenshot shows the 'Detail prenosu PC' window in the Customer Monitor application. The window displays a table of data transfers categorized by IP address. The table has columns for 'IP adresa', 'Total', 'Download', 'Upload', and 'Port #: Download/Upload'. The data is filtered for the time interval '04.09.2012 12:51:03 - 06.09.2012 13:21:03'. A red box highlights the 'Detail prenosu PC' tab, another red box highlights the date range selector, a third red box highlights the 'Možnosť exportu do excelu' button, and a fourth red box highlights the 'Port #: Download/Upload' column header.

IP adresa	Total	Download	Upload	Port #: Download/Upload
85.194.89.143 (mail.je.sk)	651.79 MB	621.21 MB	30.58 MB	80: 631.70 MB / 19.94 MB
213.81.195.52 (img.top.sk)	55.17 MB	53.47 MB	1.70 MB	80: 53.47 MB / 1.70 MB
92.240.251.49 (social.sk.sk)	55.26 MB	52.51 MB	2.77 MB	110: 52.51 MB / 2.77 MB
5.9.40.213 (static.213.40.9.5.clients.your-server.de)	25.40 MB	25.40 MB	945.03 KB	80: 25.40 MB / 945.03 KB
46.229.225.193 (46.229.225.193.vn.sk)	12.46 MB	11.96 MB	530.41 KB	80: 11.96 MB / 530.41 KB
217.87.17.133 (sm.sk.sk)	9.21 MB	4.35 MB	4.86 MB	80: 4.32 MB / 4.17 MB
155.26.55.94 (sm.sk.sk)	8.79 MB	7.40 MB	1.39 MB	80: 7.40 MB / 1.39 MB
85.88.114.214 (sm-85-88-114-214.sip.net)	8.87 MB	8.80 MB	173.29 KB	80: 8.80 MB / 173.29 KB
174.26.4.141	8.01 MB	7.85 MB	157.62 KB	80: 7.85 MB / 157.62 KB
82.195.125.38	7.30 MB	7.16 MB	145.37 KB	80: 7.16 MB / 145.37 KB
82.195.125.34	7.20 MB	7.05 MB	145.39 KB	80: 7.05 MB / 145.39 KB

Image: Zobrazenie portov v rozpise dátových prenosov podľa IP adres

The ports are next displayed in the section breakdown of [data transfers according to applications](#) [2].

The screenshot shows the 'Detail prenosu PC' window in the Customer Monitor application. The window displays a table of data transfers categorized by application. The table has columns for 'Proces', 'Total', 'Download', 'Upload', and 'Port #: Download/Upload'. The data is filtered for the time interval '03.09.2012 14:15:37 - 06.09.2012 14:45:37'. A red box highlights the 'Detail prenosu PC' tab, another red box highlights the date range selector, a third red box highlights the 'Možnosť exportu do excelu' button, and a fourth red box highlights the 'Port #: Download/Upload' column header.

Proces	Total	Download	Upload	Port #: Download/Upload
firefox.exe	837.23 MB	790.24 MB	47.00 MB	80: 458.17 MB / 14.02 MB
chrome.exe	196.82 MB	140.31 MB	16.51 MB	80: 121.08 MB / 15.88 MB
Monitor.exe	94.25 MB	83.25 MB	11.00 MB	110: 75.39 MB / 3.90 MB
skype.exe	12.27 MB	10.50 MB	795.18 KB	80: 11.31 MB / 724.24 KB
svchost.exe	1.87 MB	801.75 KB	909.85 KB	777: 404.00 KB / 453.29 KB
Unlabeled	371.75 KB	282.83 KB	88.93 KB	80: 278.05 KB / 82.56 KB
GoogleUpdate.exe	136.08 KB	81.37 KB	55.71 KB	80: 81.37 KB / 56.71 KB
DesoCens.exe	2.94 KB	1.05 KB	1.89 KB	udp: 1.05 KB / 1.89 KB
Unknown	81.05 MB	78.24 MB	4.84 MB	
TOTAL	1.16 GB	1.06 GB	81.16 MB	

Image: Zobrazenie portov v rozpise dátových prenosov podľa aplikácií

report-Sula [iba na čítanie] [režim kompatibility] - Microsoft Excel

Súbor Domov Vložiť Rozloženie stránky Vzorové Údaje Porušit Zobraziť Doplnky

Calibri 14 A⁺ A⁻ Všeobecné Podmienené formátovanie Formátovať ako tabuľku Štýly buniek Vložiť Odstáň Formát Zoradiť a filtrovať Najst a vybrať Sign and Encrypt Privacy

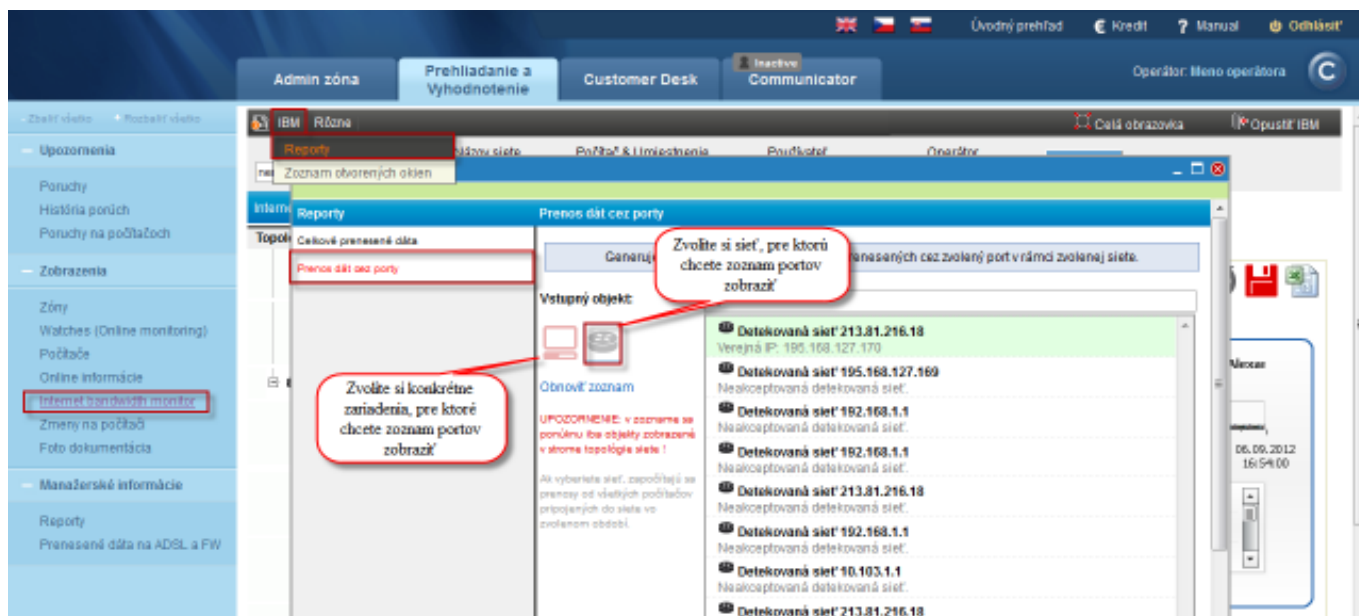
A1 NAWPC04 - Prenos dát procesov rozdelený na TCP porty a ostatné protokoly, 03.09.2012 14:15:37 - 06.09.2012 14:45:37

	A	B	C	D	E	F	G	H	I	J	K	L	M	N
1	NAWPC04 - Prenos dát procesov rozdelený na TCP porty a ostatné protokoly, 03.09.2012 14:15:37 - 06.09.2012 14:45:37													
2	NAWPC04 / NAW56 / sestricky													
3														
4	Prenos cez procesy													
5	Proces	Total (kB)	Download (kB)	Upload (kB)	Port	Download/Upload (kB)								
6														
7	firefox.exe	857 326.63	809 201.39	48 125.24	8000	80.00	443.00	81.00	1.33	udp				
8	chrome.exe	160 584.22	143 677.08	16 907.14	80	404.00	443.00	238.16	80.00	159.63	udp	0.00	0.00	
9	Monitor.exe	96 515.75	85 248.69	11 267.06	110	80.00	6 484.73	???	1 504.15	2 525.00	56.85	udp		
10	ekrn.exe	12 568.46	11 775.28	793.19	80	443.00	193.90	udp	0.00	0.00				
11	svchost.exe	1 711.63	801.78	909.85	???	404.00	443.00	238.16	80.00	159.63	udp	0.00	0.00	
12	***Unknown***	371.75	282.83	88.93	80	278.05	443.00	4.69	udp	0.09	0.09			
13	GoogleUpdate.exe	138.08	81.37	56.71	80	81.37	udp	0.00	0.00					
14	DesCon.exe	2.64	1.05	1.58	udp	1.05	1.58							
15														
16	Prenos cez IP adresy													
17	IP adresa	Total (kB)	Download (kB)	Upload (kB)	Port	Download/Upload (kB)								
18	93.184.69.143 (mail.jemnemelo)	484 378.13	469 573.60	14 804.53	8000	80	411.34	447.59	icmp	0.00	0.00	gre		
19	92.240.251.49 (seemal.seal.sk)	81 279.50	77 202.61	4 076.88	110	4 076.88	icmp	0.00	0.00	gre	0.00	0.00	esp	
20	213.81.185.52 (img.topky.sk)	61 249.47	58 212.34	3 037.13	80	3 037.13	icmp	0.00	0.00	gre	0.00	0.00	esp	
21	5.940.213 (static.213.40.9.5.cfe)	27 055.81	26 089.78	946.03	80	946.03	icmp	0.00	0.00	gre	0.00	0.00	esp	
22	81.95.98.17 (gds36b.active24.cz)	20 960.41	20 311.37	649.04	80	649.04	icmp	0.00	0.00	gre	0.00	0.00	esp	
23	62.168.125.34	16 327.11	16 015.18	311.93	80	311.93	icmp	0.00	0.00	gre	0.00	0.00	esp	
24	217.67.17.133 (sm.seal.sk)	15 449.32	7 468.29	7 981.03	80	7 407.24	7 163.46	2525	61.05	817.57	icmp	0.00	0.00	gre
25	46.229.225.193 (46.229.225.193)	12 775.48	12 245.07	530.41	80	530.41	icmp	0.00	0.00	gre	0.00	0.00	esp	

Worksheet

Prípravený 100%

View of ports for a specific network or a device is easily generated through reports. Reports are located at *IBM -> Reports*, and are displayed on the next image.



Page 2 of 3

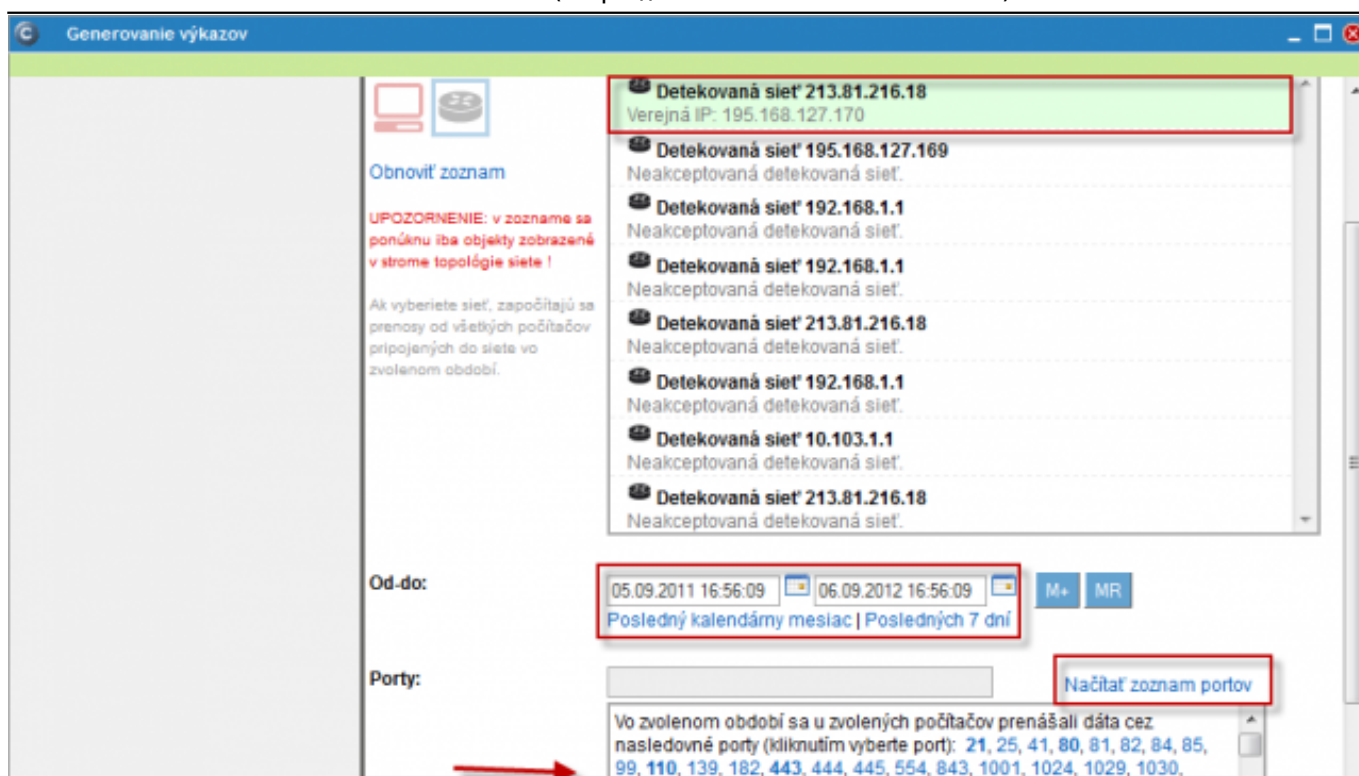


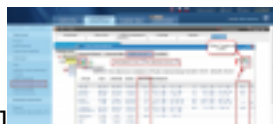
Image: Zoznam portov vygenerovaný za konkrétnu sieť

Date:

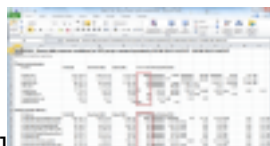
03/03/2012



[3]



[4]



[5]



[6]



[7]

Links

[1] <https://www.customermonitor.co/how-cm-works-0/monitoring-and-diagnostics/data-transferred-through-internet-internet-bandwith-0>

[2] <https://www.customermonitor.co/how-cm-works-0/monitoring-and-diagnostics/data-transferred-through-internet-internet-bandwith-1>

[3] <https://www.customermonitor.co/sites/default/files/porty2.png>

[4] <https://www.customermonitor.co/sites/default/files/porty1.png>

[5] <https://www.customermonitor.co/sites/default/files/porty3.png>

[6] https://www.customermonitor.co/sites/default/files/porty5_0.png

[7] <https://www.customermonitor.co/sites/default/files/porty4.png>