

The most burdening processes of CPU and RAM can be displayed in many places.

View of the most burdening processes of CPU, RAM in the section Online information

In the section *Presentation and Evaluation -> Presentation -> Online information* is displayed the current status and there are given two processes that load CPU and RAM the most among the highlighted lines with CPU and Memory processes, as shown on the next image. Based on this information, you can always tell, which processes are currently the most burdening for the device.

Logged users		User 1	Juraj-HPUnraj - ADMINISTRATOR
System usage	Cpu system usage	19 %	
	Cpu kernel usage	4 %	
	Memory usage	64 %	
	Disk activity	35 %	
	Disk avg read queue	0	
Processes by cpu	Process 1	firefox.exe (5.5%)	
	Process 2	C:\windows\System32\FlashPlayerPlugin_31_0_002-146.exe (4.4%)	
Processes by memory	Process 1	firefox.exe (428 MB)	
	Process 2	OUTLOOK.EXE (141 MB)	
Ping connection monitoring	Description	www.google.sk (12x in 3m)	
	Packet loss	10 %	
	Round trip time	217 ms	

Image: Online info na CM portáli - aktuálny stav a zvýraznenie riadkov s CPU, Memory procesmi

An example from table history of Online info and framing the columns with TOP processes.

Časť viďto

Ročník viďto

Upozornenia

Poruchy

História porúch

Poruchy na počítačoch

Zobrazenia

Zóny

Watches (Online monitoring)

Počítače

Online informácie

Internet bandwidth monitor

Zmeny na počítači

Foto dokumentácia

Manažerské informácie

Reporty

Prenášané dáta na ADSL a FW

Admin zóna

Prehliadanie a Vyhodnotenie

Customer Desk

Online 0 Communicator

Operátor: Meno operátora

Zóny

Spoločnosť

Operátor

OS

Počítač & Umiestnenie

Zoradiť podľa

☒ Zahrnúť ručne zadané počítače

Používateľ

Zoradiť ako

Vstupne

☐ Len online počítače

Hľadať

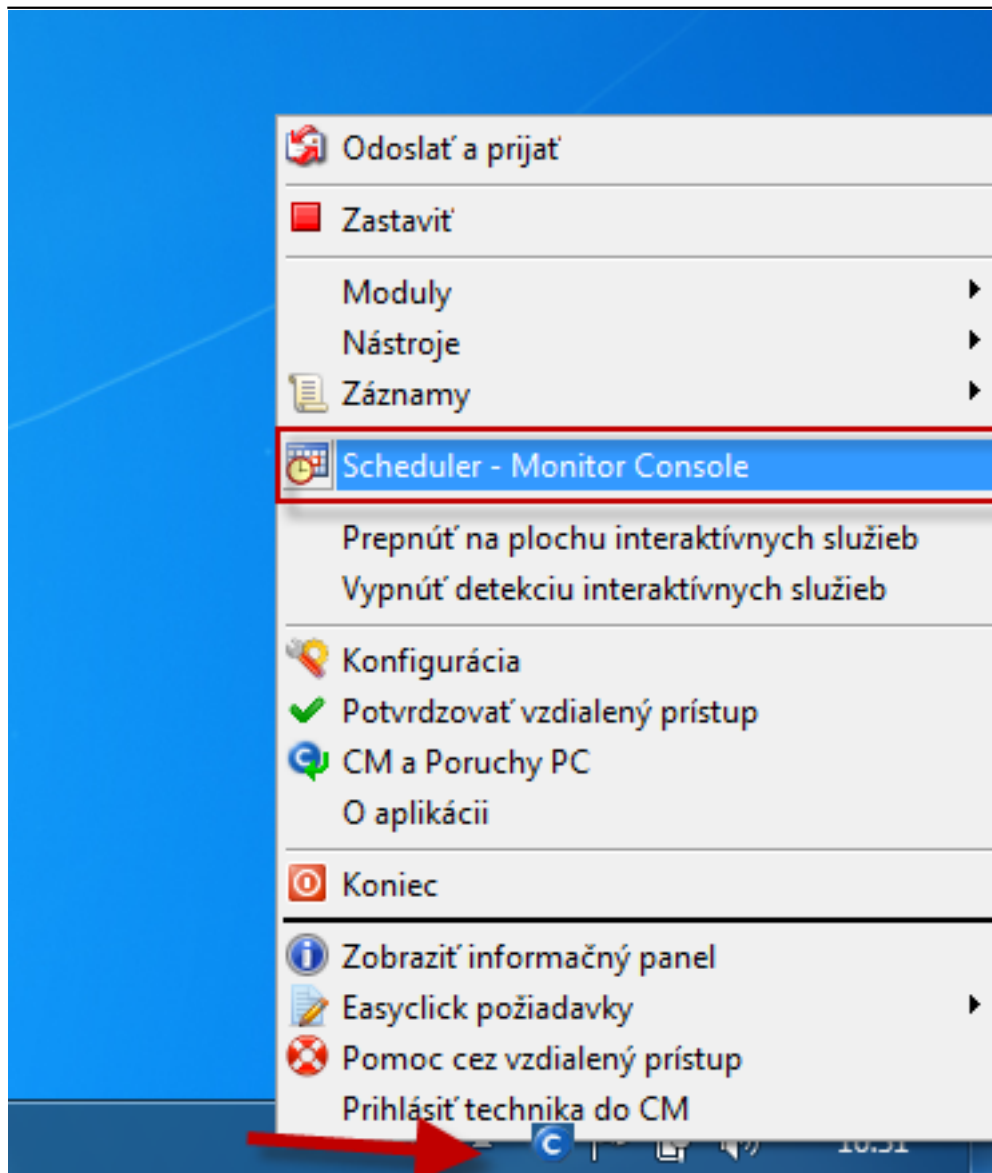
Zóna Online informácie [zobrazená 1 položka]

Sekcia	Parameter	Value
JURAJ-HP	Show	History
	Network Name	JURAJ-HP
	User	Juraj
	Current Login	Juraj-HPUnraj
	Location	Topolova
	Phone	
	Online connection	23. Jan 2013 15:40:03
	Remote Access	
	Global ip	188.121.188.165
	Computer uptime	0 days 05:30:00
Logged users	User 1	Juraj-HPUnraj - ADMINISTRATOR
System usage	Cpu system usage	5 %
	Cpu kernel usage	2 %

Vstup do zobrazenia histórie z online informácií v tabuľkovej alebo grafickej forme

Image: Zobrazenie vstupu do histórie online informácií

The history is shown max 24 hours ago.



In the left menu click on the section System info, which will load a list of all processes that load CPU and RAM, with more detailed information about the specific processes. Description of the individual parts of this section, and more information can be found at [System info](#) [1].

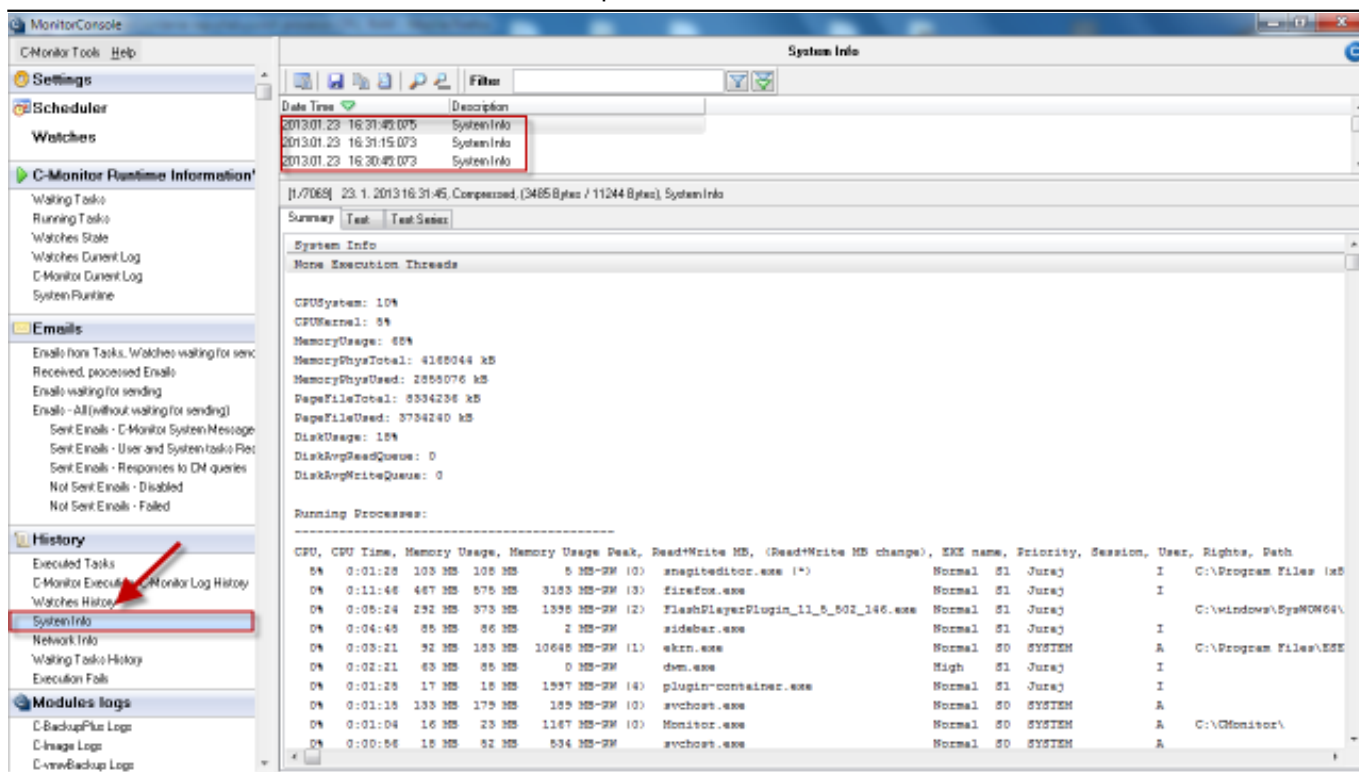


Image: Zobrazenie System info v C-Monitor Windows klientovi

Evaluation and graph of course of the computer's load can be in C-Monitor scheduler also displayed in the section *System Runtime* as shown on the following image. The graph is interactive, which means that if you click anywhere on the graph, you'll see the values of system information that were measured at the time.

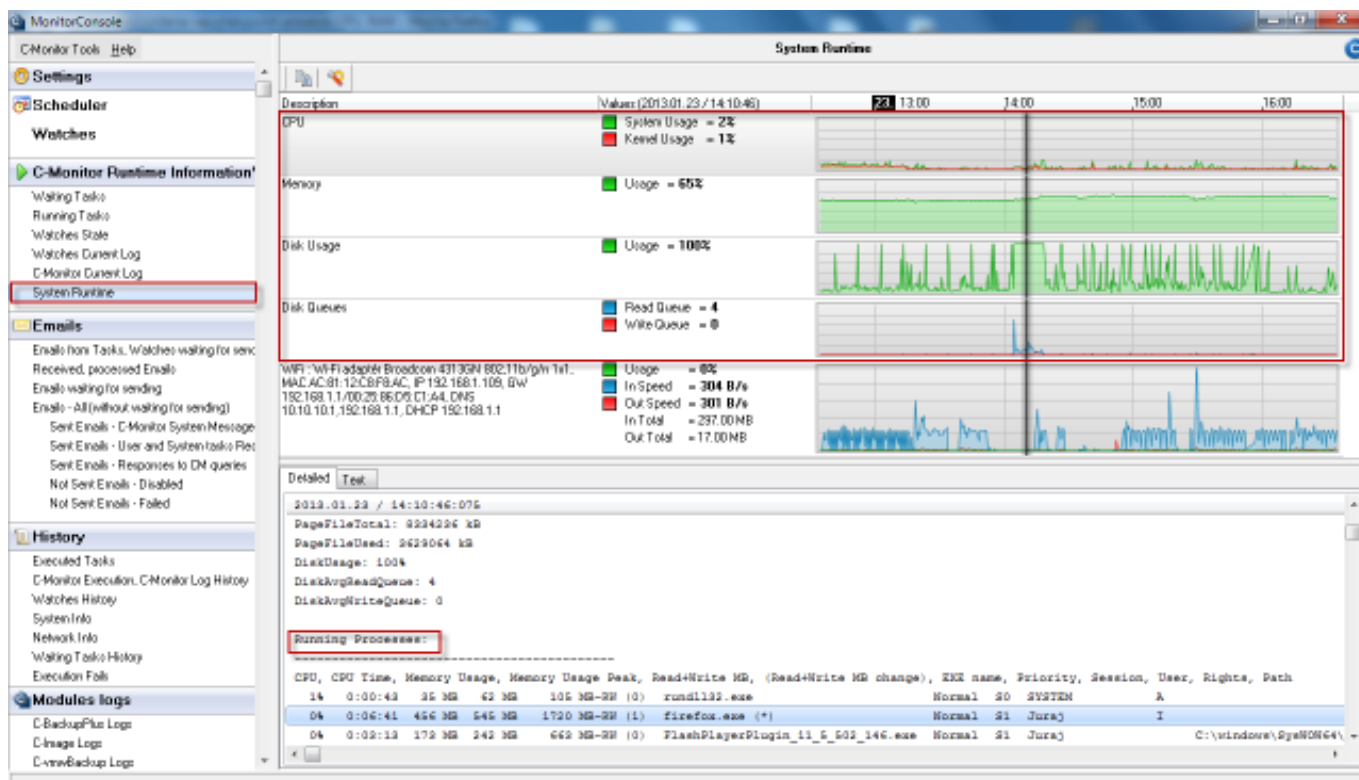


Image: Zobrazenie System Runtime v C-Monitor Windows klientovi

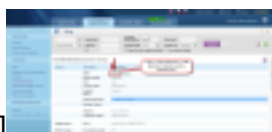
Date:

12/30/2012 External Links:

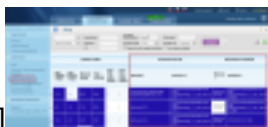
[System info](#) [2] [Online informácie](#) [3] Images:



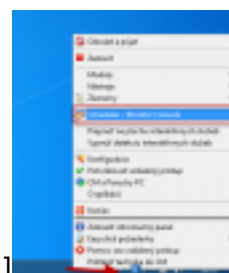
[4]



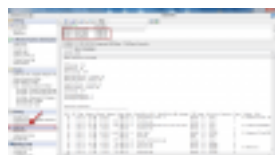
[5]



[6]



[7]



[8]



[9]

Links

[1] <https://www.customermonitor.co/how-cm-works-0/components-and-architecture-cm/c-monitor-windows-client/c-monitorconsole/system-info>

[2] <https://www.customermonitor.co/node/793>

[3] <https://www.customermonitor.co/node/489>

[4] <https://www.customermonitor.co/sites/default/files/online%20info%20-%20zatazenie%20%2Btop%20procesy.png>

[5] <https://www.customermonitor.co/sites/default/files/vstup%20do%20historie.png>

[6] <https://www.customermonitor.co/sites/default/files/zobrazenie%20najvytazujucej%20procesov%20v%20v%20tabulkovej%20forme.png>

[7] https://www.customermonitor.co/sites/default/files/vstup%20do%20schedulera_1.png

[8] https://www.customermonitor.co/sites/default/files/system%20info_1.png

[9] https://www.customermonitor.co/sites/default/files/system%20runtime_0_0.png